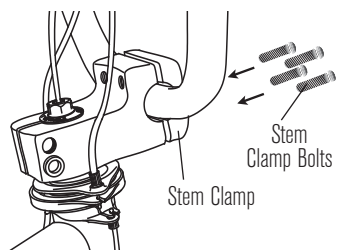
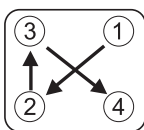


Step 1: Install Handlebars

A) Remove (4) Stem Clamp bolts from Stem clamp.

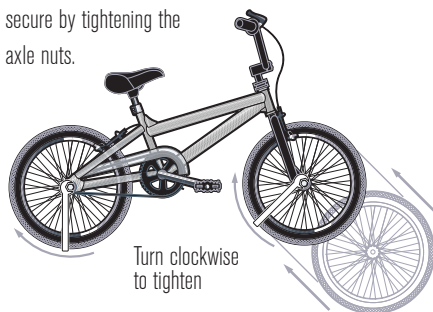


B) Position the Handlebars with the brake levers forward and secure the handlebar in the Stem Clamp with the (4) Stem Clamp bolts. Follow the tightening sequence as shown.

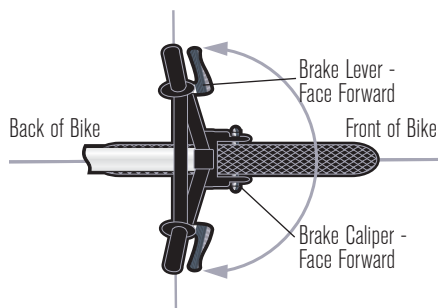


Step 2: Install Front Wheel

A) Insert front wheel snugly into fork dropouts and secure by tightening the axle nuts.



B) Align Front Wheel and Handlebars

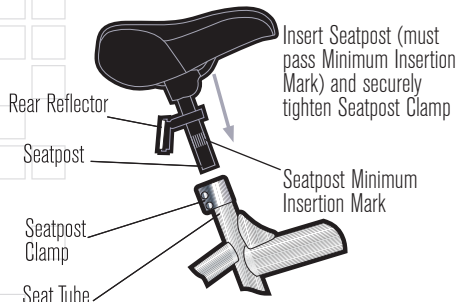


C) Adjust front brake cable to proper position so that brake shoes are within 1/2" from the rim

! **WARNING:** For safe operation you must secure the wheel properly. Always check to see that the wheel is secure before you ride.

Step 3: Install Seat And Seatpost

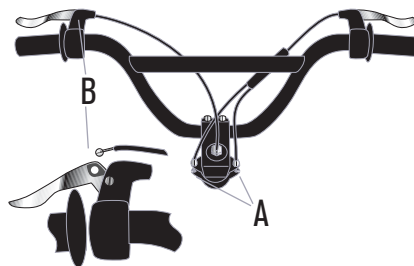
A) Insert Seatpost (must past the Minimum Insertion Mark), adjust to proper height and securely tighten Seatpost Clamp



NOTE: When adjusting the Seatpost, the minimum insertion mark on the seatpost must remain in the seat tube.

Step 4: Connect Brake Cables

A) Connect double cable from right brake lever to rotor. This is the rear brake.



B) Connect cable that comes through the handlebar stem to left brake lever. This is the front brake.

Step 5: Install Pedals

A) Check for the right (R, Red) sticker and left (L, green) sticker on each pedal and crank arm. Match the appropriate pedal to each crank (right to right and left to

left) for assembly. Start each pedal spindle by hand to avoid stripping the threads.

B) Screw on Left Pedal (with "L" on bolt) counter-clockwise. Left pedal is Reverse-Threaded.

C) Screw on Right Pedal (with "R" on bolt) clockwise.

D) Use included 15mm wrench to securely tighten so that the shoulder of the pedal spindle is securely tightened against the crank arm.

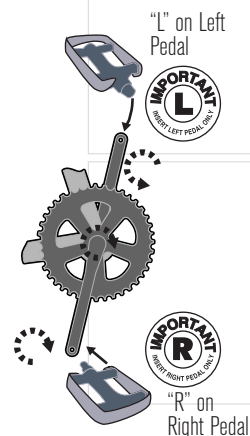
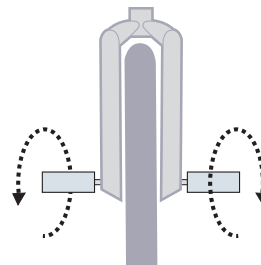
! **WARNING:** Attachment of an incorrect pedal into a crank arm will cause irreparable damage. Unless the shoulder of the pedal spindle is tight to the face of the crank arm, the pedal may back out. Make it tight.

Step 6: Install Freestyle Pegs

A) Thread front peg pair and rear peg pair onto axles.



B) Clockwise to tighten the peg pairs.



! **WARNING/IMPORTANT**

CAUTION: To ensure safe and better use of parts, please see detail assembly instructions for rotor, brake installation and adjustments in your owner's manual.

IMPORTANT: PLEASE BE AWARE THAT YOU ARE RESPONSIBLE FOR READING AND UNDERSTANDING YOUR OWNER'S MANUAL. THE MANUAL CONTAINS ALL SAFETY AND OPERATING INSTRUCTIONS.

Save Time and Money

Don't return your product to the store if you need replacement parts or have questions pertaining to assembly of your product, we encourage you to call Dynacraft Customer Service at 1-800-288-1560



89 SOUTH KELLY ROAD
AMERICAN CANYON, CA 94503
1.800.288.1560

www.dynacraftbike.com